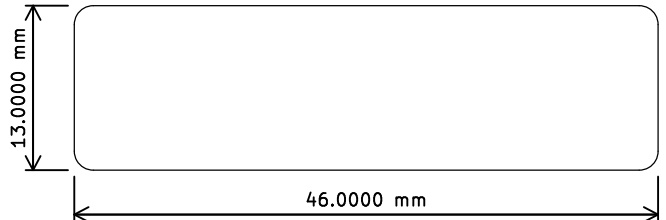
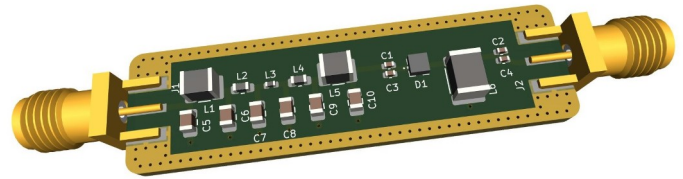


### Overview

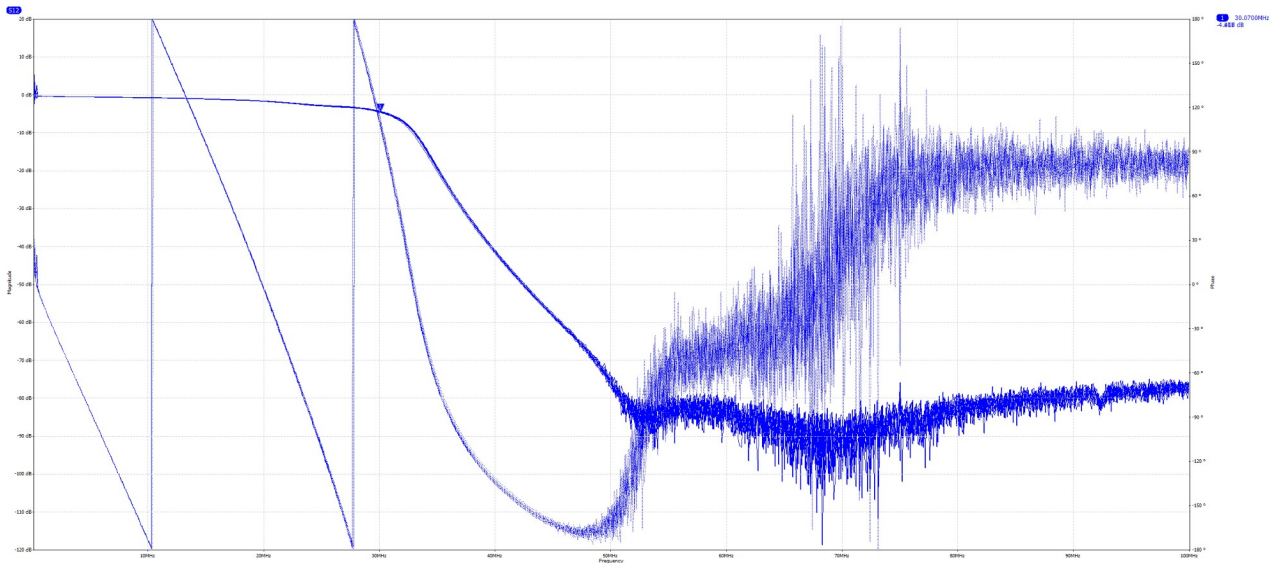
The RCN-RFSCM-0002 signal conditioning module is designed for protecting the input of an HF radio receiver, or equivalent device, against signals outside the band of interest and signals too strong for the input stage.

Signals outside the band of interest are rejected by a low-pass filter with a 32MHz corner frequency at 3dB. The filter is built with high current inductors in order to reduce the insertion loss as much as possible. The low-pass filter is followed by a power limiter specified for +24dBm±1dB.

While the module can be connected either way, it is better to connect the source to the filter side in order to reduce the chance of having very strong out-of-band signals activating the power limiter when it is not really needed.



### Typical Frequency&Phase Characteristics



### RCN-RFSCM-0002-x4

This is a device including 4 RCN-RFSCM-0002 modules in a milled Aluminium enclosure. The enclosure has labels on both sides correctly identifying the inputs and outputs as per the recommendation.

